



# Division of Fire Safety Dashboard Improvements

## Problem Statement

Data collection was an unorganized process and did not provide leadership with insight to all the programs within the agency. The data really didn't create a picture of what the programs were accomplishing, and often at times, the data wouldn't reconcile, causing more burdensome work on everyone involved to track down the discrepancies.

## Scope

The team brainstormed strategies to collect needed data from each program on a monthly basis using resources available while removing burdensome steps.

## Action

Utilizing Survey123, the team created a survey designed to capture data from every program on a monthly basis. The link for survey results was connected to Tableau for monthly dashboard creation. Data is now collected each month with staff only answering questions with a survey link- no more emailing spreadsheets.

## Analyze

- Previous dashboards only gave a small glimpse into the work that was being accomplished each month by employees.
- Collecting the data, sharing it, and creating dashboards had multiple steps including multiple emails and spreadsheet creations.

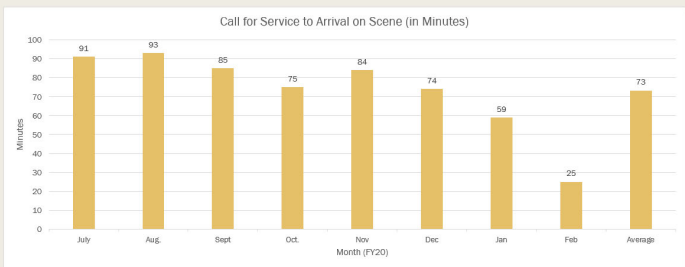
## Outcomes

Dashboards have now been expanded to include much more data and a more detailed look into the work accomplished by our programs. Dashboards are updated by simply answering survey questions and hitting refresh in Tableau now.



## DIVISION OF FIRE SAFETY

DPS Initiative: Identify hazards and threats to public safety.



## Fire & Explosion Investigations

### Arrests Made

2021	Month	Arrests
	January	0
	February	0
	March	0
	April	0
	May	1
	June	3

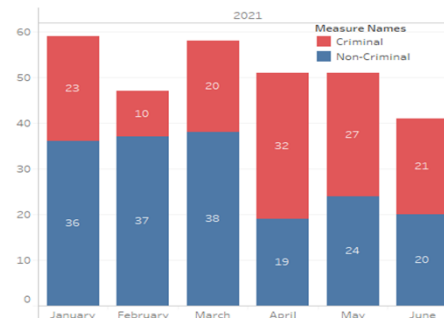
Division of Fire Safety Fire Investigators, who are MO POST licensed law enforcement officers, are on call 24 hours a day, seven days a week. They are stationed throughout the state and respond to requests for assistance from local fire departments and law enforcement agencies for fire and explosion investigations.

### Staffing

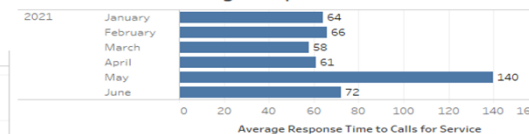
2021	Month	Investigator 1	Investigator 2
	January	14	2
	February	15	2
	March	15	2
	April	16	1
	May	16	1
	June	16	1



## Criminal vs Non-Criminal Investigations



## Average Response Time



## Related Dollar Loss

